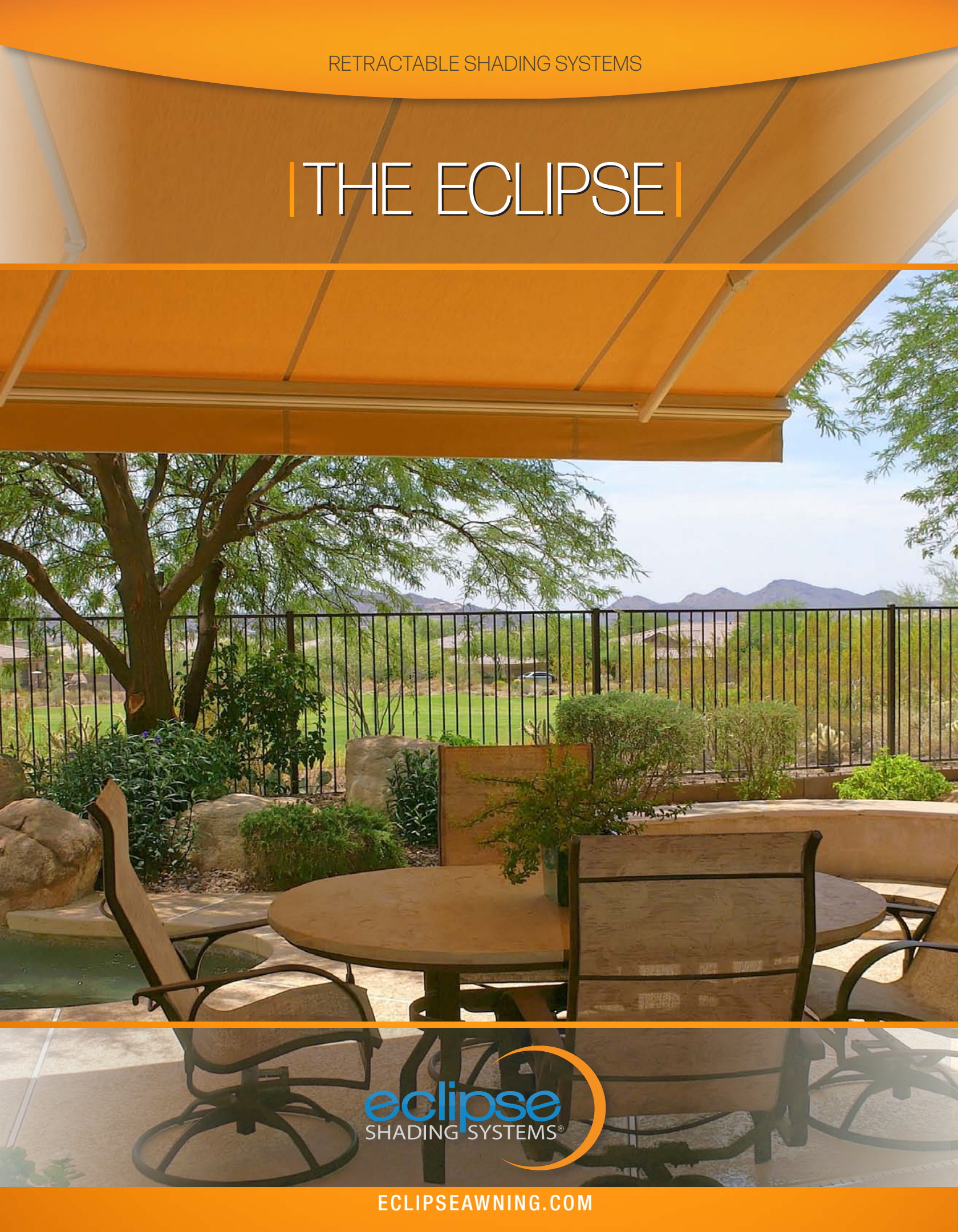


RETRACTABLE SHADING SYSTEMS

| THE ECLIPSE |



eclipse
SHADING SYSTEMS®

ECLIPSEAWNING.COM

UNIQUELY DESIGNED



CUSTOM BUILT TO YOUR SPECIFICATIONS

Every Eclipse shading system is custom made and professionally installed by our independent dealers to meet your individual requirements. The Eclipse model is available up to 40' wide with projections up to 11'6" (up to 22' wide x 11'6" projection with the semi cassette option). Eclipse shading components meet stringent ISO 9001 and TUV standards and are assembled in the USA by skilled craftspeople.



ADVANCED BELT TECHNOLOGY



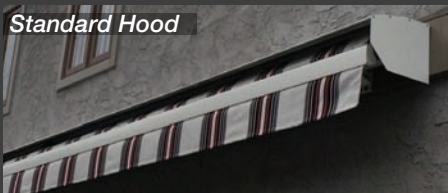
While others have exposed cables or chains Eclipse incorporates our unique Advanced Belt Technology - ABT. Our Eclipse model ABT consists of 9 individually wound cables encased in a poly-carbon, UV resistant coating. This time proven feature has been an Eclipse exclusive from our beginning and will provide you with a long, worry free life for your shading system.

TO MEET YOUR NEEDS



MOTORIZED FOR EASY USE

Your Eclipse features a UL listed motor from Somfy, the world leader in home automation. You can operate your Eclipse with a wireless wall switch, a hand held remote, a smart device... or from all of these! To further increase the effectiveness of your shading system, we offer automatic sun and motion sensors - ask your dealer for more details.



MOUNTING AND FABRIC PROTECTION

The Eclipse can be ordered 3 ways:

- With a fully exposed rolled up fabric referred to as an "Open Roller" - typically for under soffit mounting
- With a protective Standard Hood for wall mounting
- With a Semi Cassette providing full fabric protection for any mounting application - we recommend this option especially when roof mounting up to 22' wide x 11'6" projection

PRODUCT OPTIONS



DROP SHADE

Add even more solar protection while increasing your privacy with the Eclipse Drop Shade. This option features an open mesh, sun screen fabric that extends down from the front bar over the width of the awning. The Drop Shade is self storing and can be motorized or manually operated. This option is not available with the Semi Cassette.



LUNAR LIGHTING

Add a unique element to your evening entertaining with exterior rated, soft glow Eclipse Lunar Lighting. Mounted to the underside of your awning you can control the lighting system with the touch of a button. These UL listed lights are safe for outdoor use and are designed not to attract bugs.



ELECTRONIC ACCESSORIES

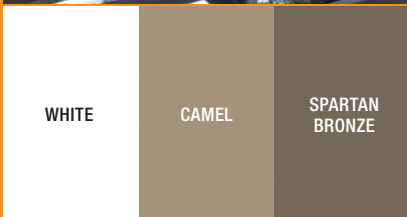
Our world class wireless components make operating your shading system effortless.

- **Wind/Motion Sensor:** This accelerometer sensor attached to the awning's framework will retract the unit if it gets too windy – adding a level of safety and security.
- **Sun Sensor:** This sensor, typically mounted to an exterior wall, will automatically extend the awning once the preset sun level is attained, and will automatically retract your shading system when the sun passes.
- **My Link™:** Do you like to control things with your smart device? Add a My Link radio controller and download a simple App allowing you to control your shading system from anywhere!



SEMI CASSETTE HOOD

Completely protect your fabric from the elements and increase your level of security with the Semi Cassette option. This option is available on the Eclipse model up to 22' wide x 11'6" projection.



HARDWARE TO MATCH YOUR DÉCOR

Eclipse offers three architecturally pleasing colors to either match or accentuate your home. Our pretreated powder coated finishes are second to none in durability and appearance.



FROM SERENE TO STUNNING, WE HAVE THE FABRIC FOR YOU

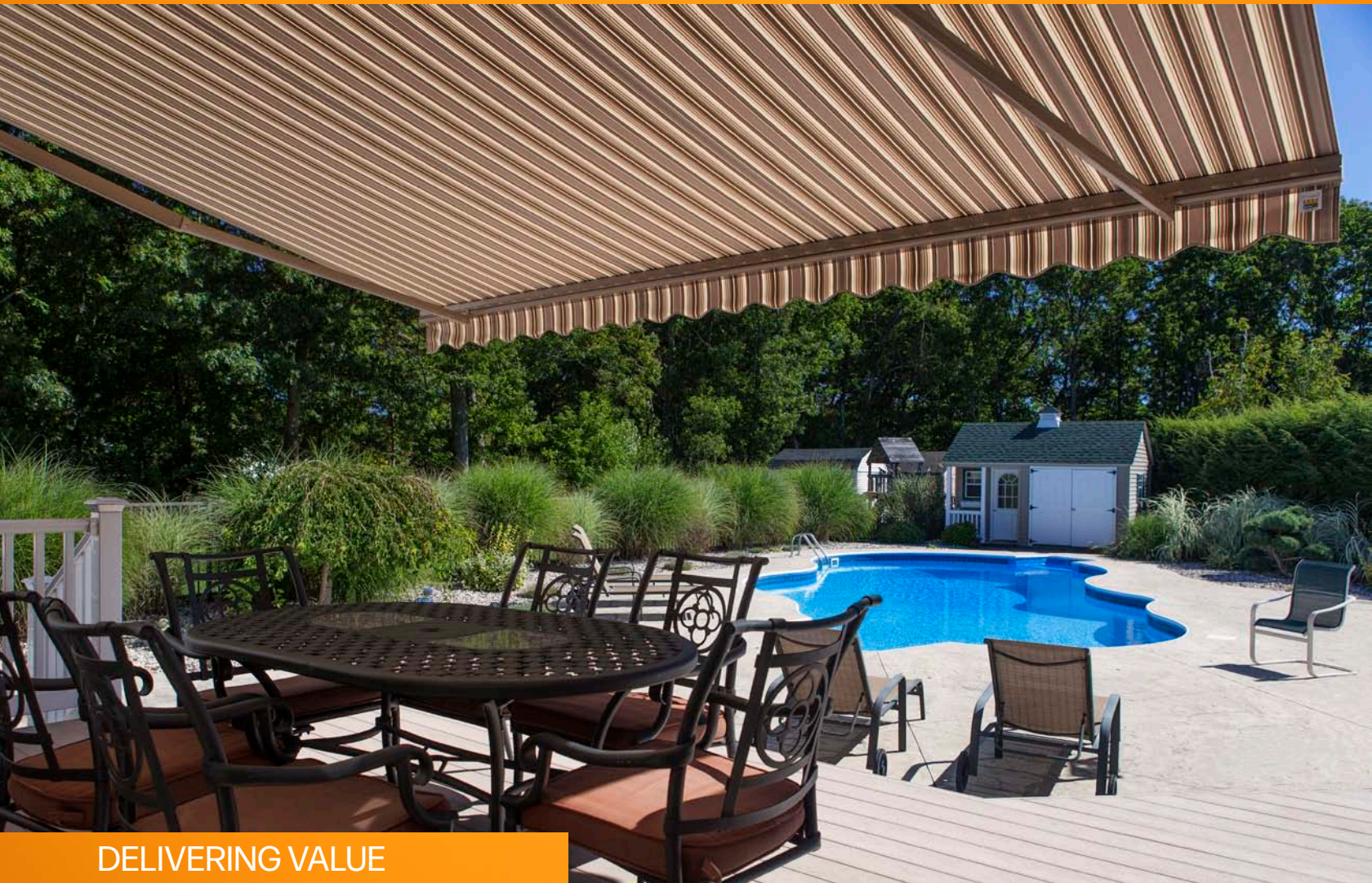
Eclipse offers over 150 long lasting, 100% acrylic fabrics from which to choose. Our covers are computer cut and sewn to create a superior fitted awning. We use the finest Tenera thread allowing us to offer you a 10 year warranty on the complete fabric cover.



PLATINUM PROTECTION PLUS – AN ADDED LEVEL OF SECURITY

Looking for a lifetime warranty on your complete shading system – from frame to fabric, motor and electronics? Then the Platinum Protection Plus is for you. Ask your dealer for complete details.

THE NEXT GENERATION IN SHADING



DELIVERING VALUE

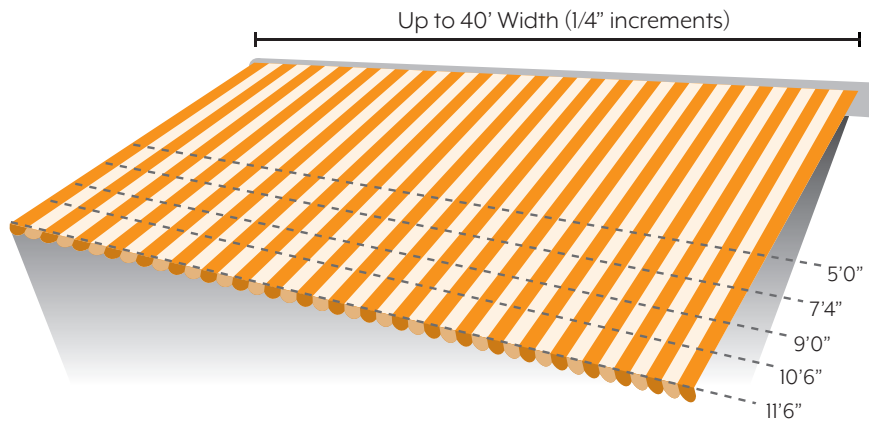
The Eclipse is our signature model of shading systems. This time tested model has shaded homes and expanded outdoor living throughout the country since our company's inception. The Eclipse offers excellent value by incorporating a full line of product options, allowing you to design a shading system to fit your individual needs. Eclipse has been rated as the #1 brand of retractable awnings for 10 years running!

ENDURING PERFORMANCE

The Eclipse can be mounted on virtually any surface and is ideal for both residential and commercial applications. This "green" solution will expand your living space, reduce interior solar heat gain, block glare and prevent fading of your furnishings - year after year. Add a European cafe' feel to your home and make the most of your outdoor living. With dozens of long lasting fabrics in an array of designer colors and patterns, you can create your own getaway just a few steps out your door. The Eclipse is a fully retractable shading system. With the touch of a button, you can fully retract your awning, keeping it safe from the elements when not in use.



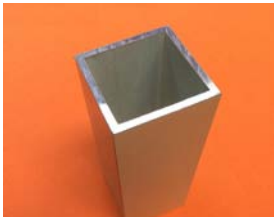
PRODUCT FEATURES



SIZES AVAILABLE

The Eclipse shading system is custom made to fit your unique space. With widths up to 40' wide and projections up to 11'6", we've got you covered!

The Eclipse components meet stringent ISO 9001 and TUV standards and are assembled in the USA by skilled craftspeople.



ALUMINUM TORSION BAR

The Eclipse features a non corrosive torsion bar that is powder coated to match the framework of the awning.

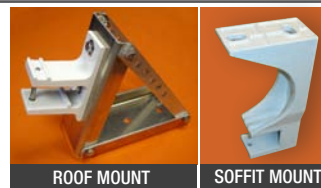
STANDARD PRODUCT WARRANTY

- 10 years on the framework & optional hood
- 10 years (non prorated) on the fabric & seams
- 5 years on motor and electronics



ADVANCED BELT TECHNOLOGY

The Eclipse exclusive, tension transmission system which incorporates our ABT has been tested and proven for almost 2 decades on performance. This design does not stretch or breakdown over time, keeping your fabric taut for years to come.



MOUNTING

Wall, ceiling or roof mounting available to match your needs.



MOTORIZED

For easy push button operation and includes a manual override feature should you lose power.

ABT	60,000 Cycles	TENSION TRANSMISSION SYSTEM
CHAIN	8,000 Cycles	
CABLE	5,000 Cycles	



Pike Awning Co.

7300 SW Landmark Lane
Portland, Oregon 97224

503-624-5600
800-866-9172
www.pikeawning.com

Your independently owned and operated dealer

**#1 Rated Brand of
Retractable Awning
10 Years In A Row!
2010 - 2019**



For more photos, customer feedback and additional product details, please visit:

ECLIPSEAWNING.COM